



SLCS NEWS

Oct, Nov & Dec 2009

From the CEO

Welcome to SLCS news, as we wrap up another year it calls for reflections and thanks. Before we share any stories from the past few months, on behalf of all the scouts and staff at SLCS I'd like to take this opportunity to express our gratitude to all of our supporters. Whether your donation was small or large, financial, material or verbal support it has seen us through the year and has we believe, made a big difference to the people and wildlife living in Luangwa Valley.



SLCS scouts October 2009. Photo by Dana Allan

Despite a difficult financial year for almost everyone, SLCS has been generously supported by so many individuals, companies and organizations which enabled us to keep all of our projects running and the scouts employed without any disturbance or setbacks. I think that's pretty impressive to say the least and it is thanks to you. Surprisingly a number of organizations have increased their support to SLCS this year and for this we sincerely thank you. The majority of tour operators in South Luangwa have also doubled their financial support to SLCS showing even further commitment to us and to conserving South Luangwa.

To the scouts and other staff members at SLCS, your ongoing dedication in protecting the wildlife and natural resources of Luangwa is inspiring and without this I would not be here today continuing the work we do. Thank you all.

Inside this issue:

New Operations Manager joins SLCS pg 2 | Wet season fly camps pg 2 | Anti-poaching results pg 3 | Lion work pg 4 | Columbus Zoo support pg 5 | RSPCA visit pg 5 | Zoo Boise supports giraffe work pg 6 | Luangwa Conservation Community Fund pg 6 |



New Operations Manager

As usual with the onset of the rains, our patrols and law enforcement approach alters slightly and it is time for the wet season fly camps to go in. Heading up the program now is our new Operations Manager, Benson Kanyembo.

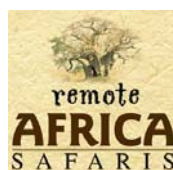
Benson was previously employed by the Zambia Wildlife Authority and has been in office for ten years. He worked to protect the rhinos in North Luangwa as an anti-poaching scout, manned the radio control room and also trained as a senior instructor before coming to South Luangwa and finally joining us at SLCS. As an instructor Benson was responsible for all of our scout training and refresher courses and brings with him a wealth of

knowledge, skills set and experience. Being a Zambian, he also understands the needs and policies of local communities. We are very happy to have Benson working with us at SLCS and look forward to some excellent results and changes over the coming months. In his words 'we have started a new chapter'.

Fly camps

Three wet season fly camps are in operation this year. Fly camp 1 is in the Luamfwa area on the western side of the Luangwa and is fully supported by Wilderness Trust. Fly camp 2 will be located along west Mwamba towards Zebra pans and will be supported by Shenton Safaris, Remote Africa Safaris and Lion Camp, and Fly camp 3 will be located along the Kapamba River and is supported by Mfuwe Lodge and the Bush Camp company. Following the same format of the previous fly camps each patrol group includes eight scouts who patrol over a twenty day rotation period. The groups are divided in to two teams who alternate on long and short

patrols. This ensures there is always a presence in the area. The 2009 fly camp in Luamfwa was only in operation for the second year and was very successful. Poachers were generally unaware of the constant presence of scouts in the area resulting in ten suspects being apprehended and a number of firearms and snares confiscated. The other two fly camps that operated from Kapamba and Chamboo had fewer results and only had one apprehension in each. This is probably due to the fact that these fly camps have been operating in the area for a number of years now and are well known to poachers.



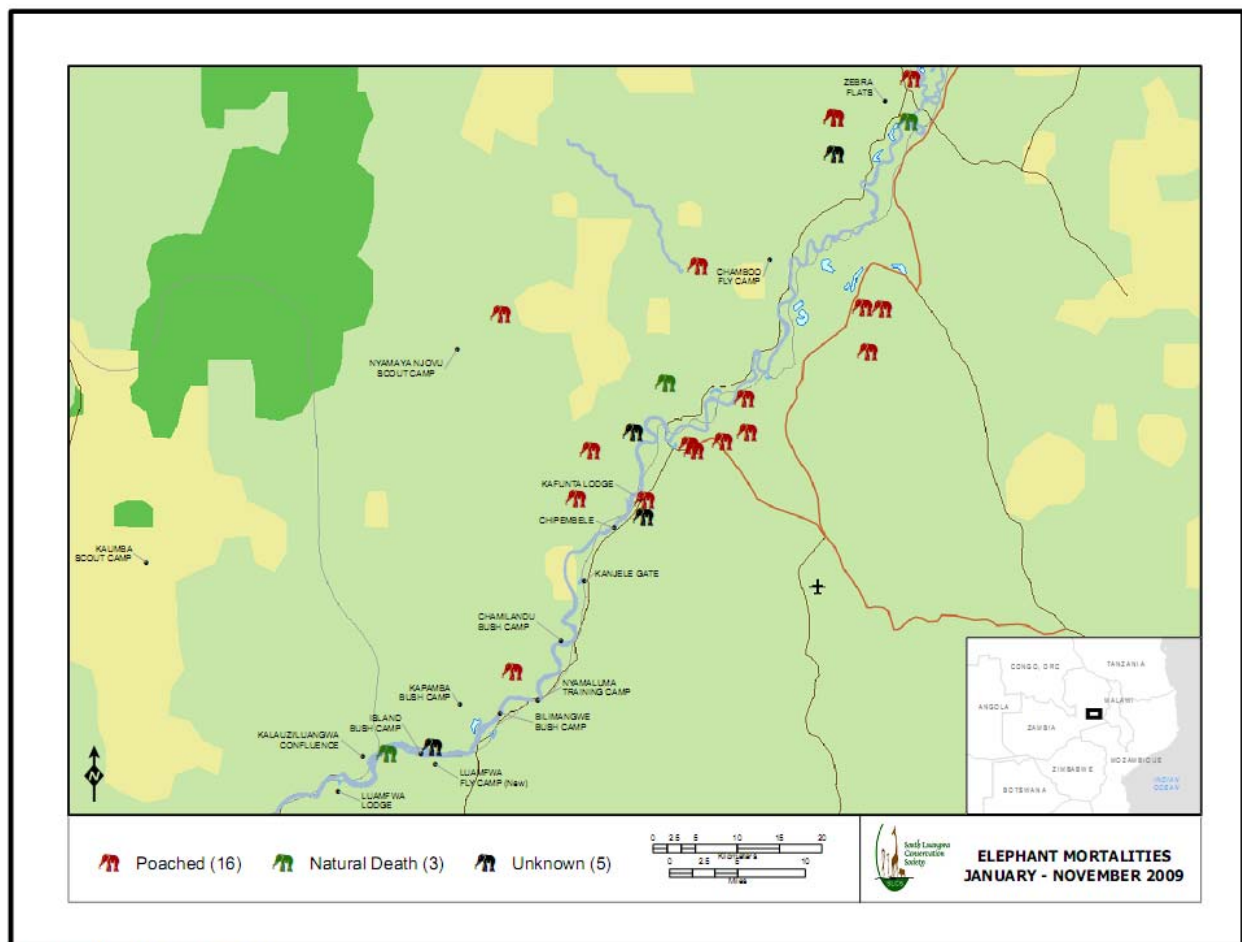
Law enforcement

The Kakumbi village scout patrol efforts in the last quarter achieved good results, particularly with snare removals which tended to be concentrated in the main Mfuwe area outside the park. Although elephant mortalities seem high, a number of these are natural or unknown deaths and some of the carcasses were over two years old but had not yet been detected or recorded by scouts.

Elephant mortalities and patrols for the year have been mapped by our GIS volunteer Lisa Mathies and can be seen below.

Kakumbi village scout patrols and results for Oct & Nov 2009

Month	Long patrol	Short patrol	Day Patrol	Snares	Suspects	Nets	Firearms	Ammunition	Drying Racks	Elephant mortalities	Ivory	Fishermen removed
Oct	1	3	10	154	7	nil	nil	nil	1	1	2	2
Nov	4	1	9	115	nil	nil	nil	nil	8	4	3	nil
Total	5	4	19	269	7	nil	nil	nil	9	5	5	2



Prepared by Lisa Mathies, GIS Corps, Dec 2009 for SLCS

Working with lions



Fig.4 Rachel McRobb (SLCS) and Egil Droge (AWDC) treating and taking blood samples from sick lion.



Fig.5. Lion with swollen neck and face

In October a number of lions from one pride were reported to have been sick and died within a few weeks of each other and three live ones were showing the same symptoms. Fearing that they would also die and that there was a high probability of whatever disease they contracted rapidly spreading through the whole pride, we quickly made arrangements with the help of John Coppinger from Tafika to locate the lions and identify the sick individuals. Not knowing what disease we were dealing with, each animal was immobilized and treated with long - acting antibiotics and anti-inflammatories. Blood samples, saliva swabs, ear notches, hair and faecal samples were taken for wildlife disease testing. Symptoms showed severe swelling around the neck, muzzle and facial area and some necrotic tissue within the mouth.

The treated lion were monitored over the next few days and showed rapid improvement. A number of diseases were ruled out and further tests are currently still being carried out by ZAWA and the Veterinary University. It is the first isolated case of the death of a number of lion in one pride in many years.

Snared elephant dies during immobilization

SLCS scouts had been looking for a young male calf with a tight snare around his neck for about two months. A couple of days ago he was found and reported by some visitors and was in a terrible state. He was unable to breathe properly unless he held his head and trunk back and appeared to be literally suffocating. The scouts tracked him and his family for two days while I made my way back from the Copperbelt. I dashed off the plane, grabbed my kit and went to dart him and his mother early in the evening. Unfortunately the calf did not make it through the immobilization due to respiratory complications and the fact that he was breathing through a hole in his neck. We were all very disappointed as this was the first elephant we have lost and we were desperate to help him, however we are satisfied to know that he is no longer suffering. This was probably the worst snared elephant suffering we have witnessed.



Chilli blasting monitoring workshop



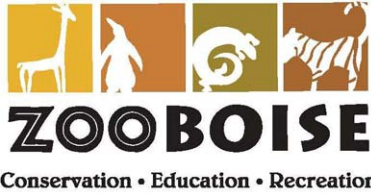
SLCS has received a grant from Columbus Zoo for monitoring and training members from the local community in alternative human elephant conflict mitigation measures. A workshop was held at ZAWA and involved

members of the six different CRB's in Lupande and local resident hunters.



We recently had a visit from RSPCA (UK) who are partners with Awely, our human animal conflict (HAC) project supporters. RSPCS were filming our efforts to reduce HAC for a UK documentary. Awely and RSPCA have also funded the production of thousands of fantastic educational posters depicting elephant conflicts, chilli fences and other mitigation measures. The posters will be used in demonstrations and workshops and delivered to schools and the community.





Zoo Boise helps protect Luangwa's giraffe

SLCS recently received a substantial grant from Zoo Boise (Idaho) to support SLCS's anti-snaring activities to protect the endemic thornicroft giraffe and other species.

The giraffe has long been recognised as one of the most charismatic wildlife species but has recently become prone to picking up snares set predominantly for other wildlife. SLCS would like to make an increased effort to reduce this with the help of Zoo Boise.

Safari operators in it for the long run by investing in the future and supporting the Luangwa Conservation and Community Fund (LCCF)

In 2010 safari operators will be taking their commitment to conservation and SLCS one step further. The Luangwa Conservation and Community Fund has been introduced by the safari operators and fully supported by tour operators both locally and internationally and will ensure the long term future of SLCS and other community projects. An extra \$10 per person per night will be added to international rates, \$5 to local rates and \$1 to campers. This fee will be split evenly between wildlife conservation and community projects and will help generate the much needed funding to run SLCS projects.

On that positive note, have a wonderful festive season and we look forward to being in touch in the New Year.

Rachel

Would you like to help support conservation in Luangwa? All you need to do is become a member. Please scroll down and find the membership application form.



SLCS membership form

Yes, I would like to sign up as a member for the South Luangwa Conservation Society.

Name

Physical address.....

Email address and phone number

Current job description for yourself

Type of membership (Please write YES in the space provided)

- Individual U\$60 per year.....
- Family membership U\$150 per year.....
- Corporate member U\$1000 per year.....
- Unspecified donation at your discretion.....

Please indicate how you will be paying ie cash, cheque, bank transfer etc
(If it is by bank transfer or online donation, we will send you the bank details).

.....

Would you like to be sent a reminder email to subscribe when your membership runs out?

Please provide a short description of how you heard about SLCS.

.....
.....

Details of transferring the donation will be forwarded to you.

Thank you for your generous support.

www.slcs-zambia.org